

INTRODUCTION OSINT & MASINT UNTUK INVESTIGASI & JURNALISTIK

START



DISCALIMER

Materi ini disusun untuk tujuan informasi dan edukasi mengenai Keamanan Teknologi Informasi (IT Security) dan tidak dimaksudkan sebagai saran profesional, legal, atau keuangan. Penulis dan penyedia materi ini tidak bertanggung jawab atas kerusakan, kerugian, atau konsekuensi negatif yang timbul dari penerapan informasi atau teknik yang dibahas dalam materi ini.

TOPIK

- ❑ Apa itu OSINT
- ❑ Apa itu MASINT
- ❑ Metodologi OSINT & MASINT
- ❑ Pemantauan data satelit
- ❑ Penentuan waktu
- ❑ Verifikasi data
- ❑ Geospatial & Geo Tagging
- ❑ Cheatsheet OSINT & Intermezo
- ❑ Bonus Resouces

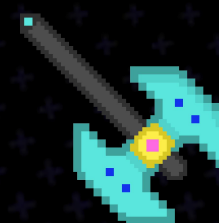
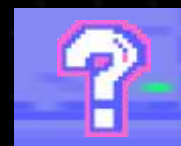
SIGN IN



SIGN IN

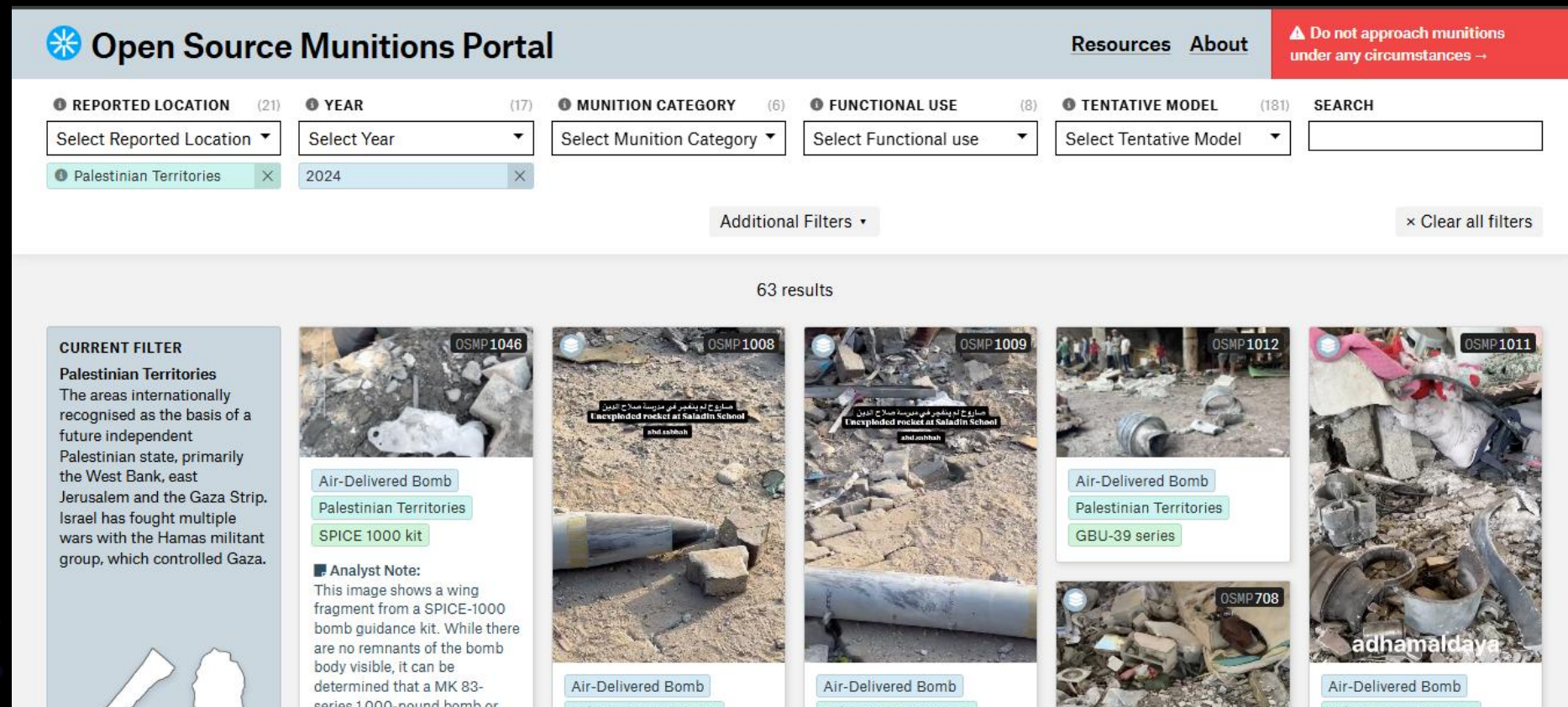
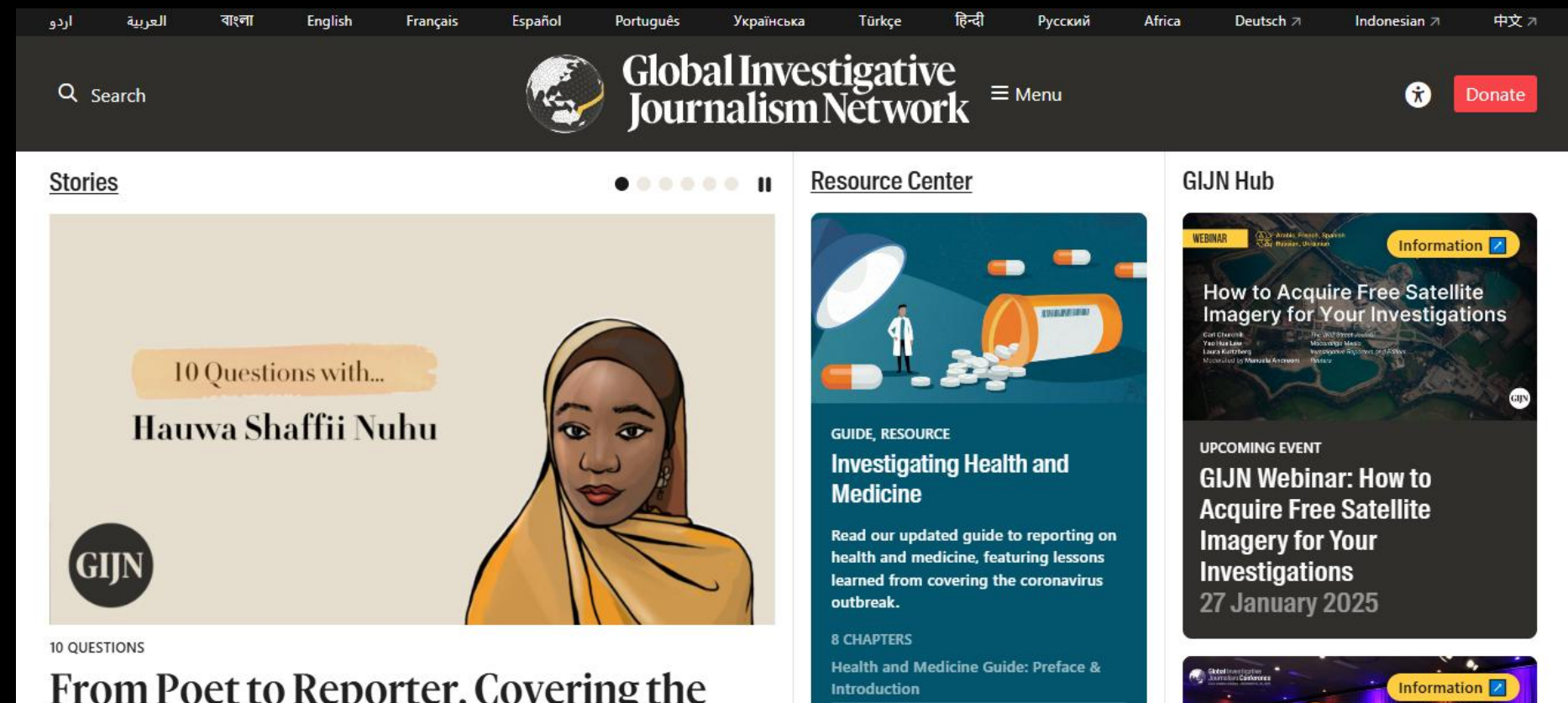


OSINT?



DARIMANA DATA BERASAL?

- ❑ Sosial Media
- ❑ Publikasi
- ❑ Jurnal
- ❑ Manusia (HUMINT)
- ❑ Data broker
- ❑ Dataset & etc



OSINT UNTUK APA?

- ❑ Etika Hacking & Siber Security
- ❑ Jurnalistik
- ❑ Militer
- ❑ Marketing
- ❑ Pendidikan
- ❑ Politik
- ❑ Screening & profiling
- ❑ Etc



TANTANGAN DALAM OSINT

- ☐ Banyaknya informasi
- ☐ Disinformasi
- ☐ Etika dan privasi
- ☐ Data yang terbatas
- ☐ Geopolitik & Propaganda
- ☐ Hukum dari suatu wilayah
- ☐ Anonimitas identitas
- ☐ Tekanan & Psikologis
- ☐ Bot komen dan postingan serta akun bot (buzzer)

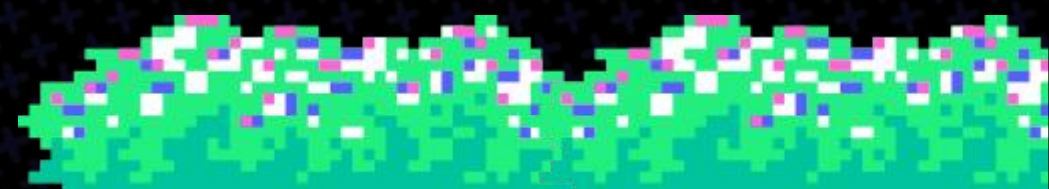
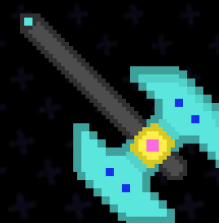
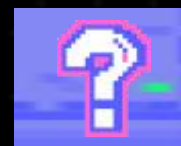
SIGN IN



SIGN IN

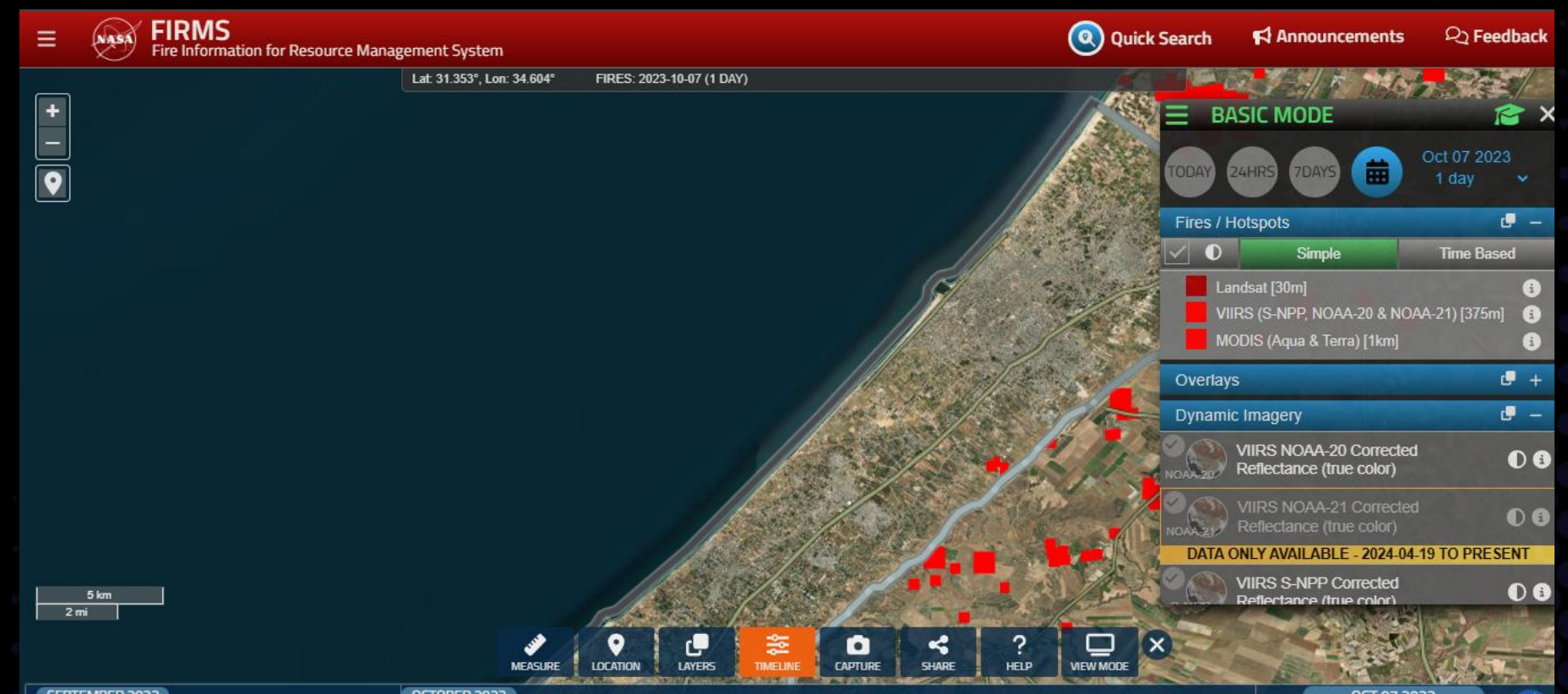
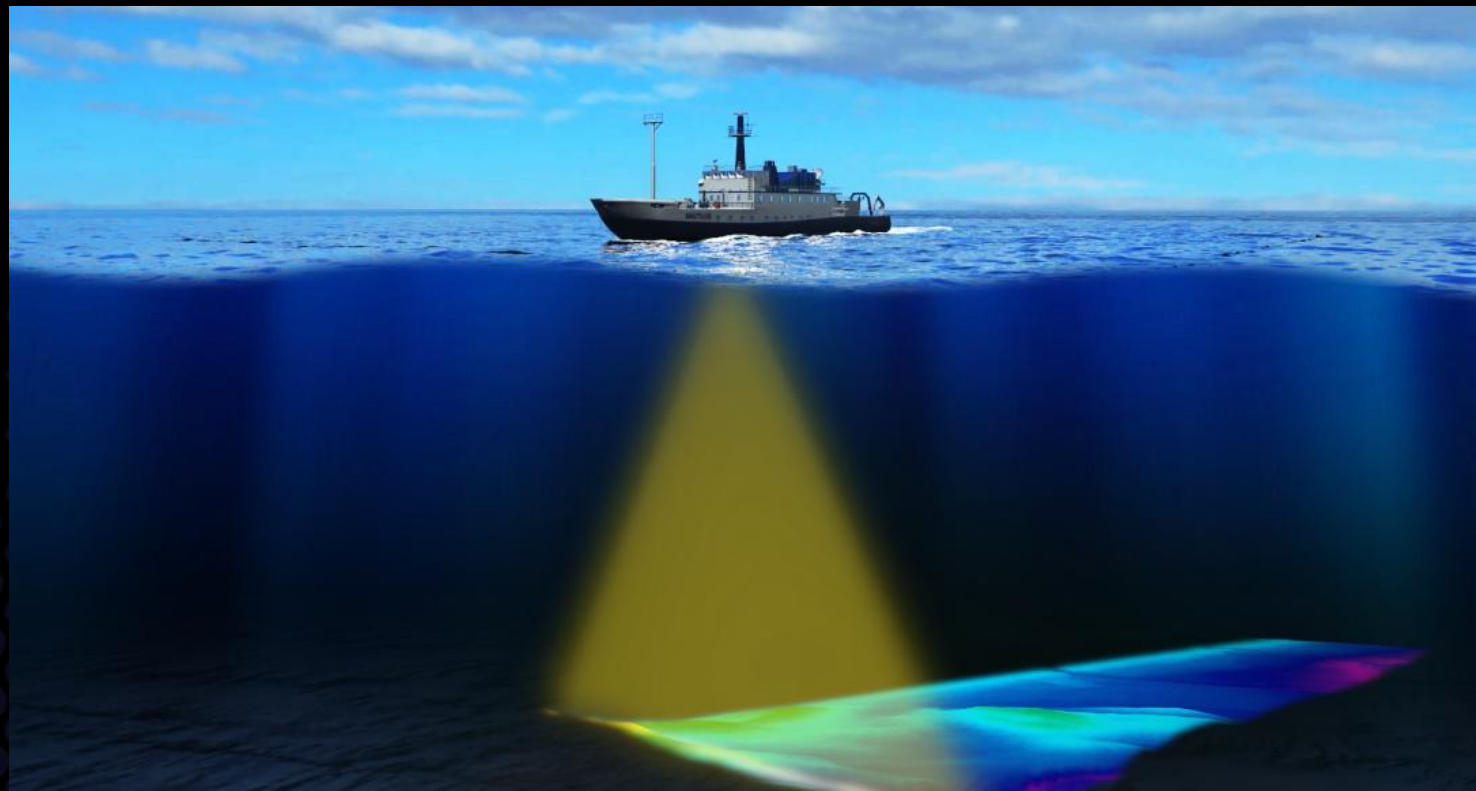
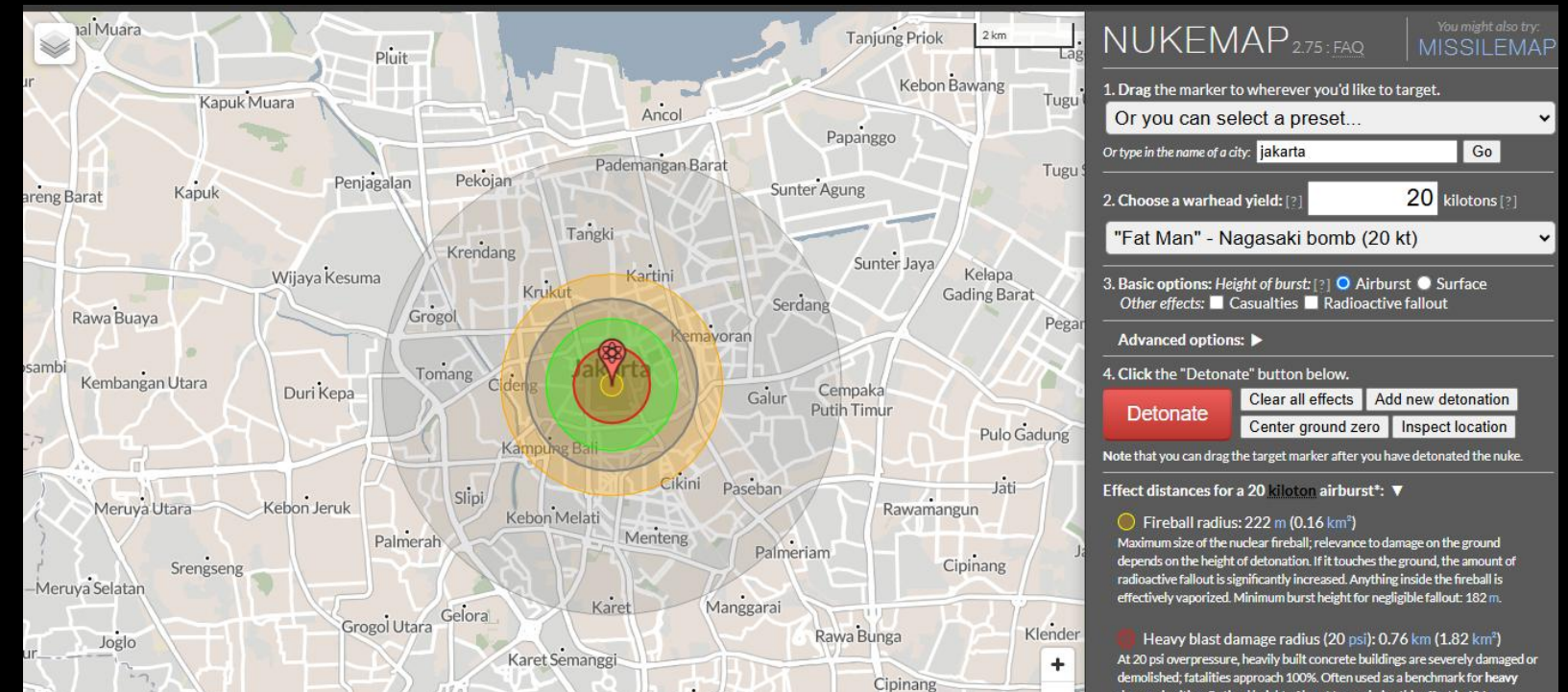


MASINT?



DARIMANA DATA BERASAL?

- ❑ Objek atau informasi yaang telah dikumpulkan
- ❑ Sensor
- ❑ Radiasi
- ❑ Tanda atau bekas suatu peristiwa
- ❑ Satelit
- ❑ Publikasi



PEMANFAATAN MASINT



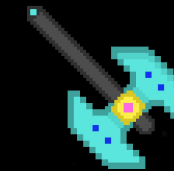
Pengukuran & Astronomi
Int



Thermal, Udara, Bencana &
Sensor Gas



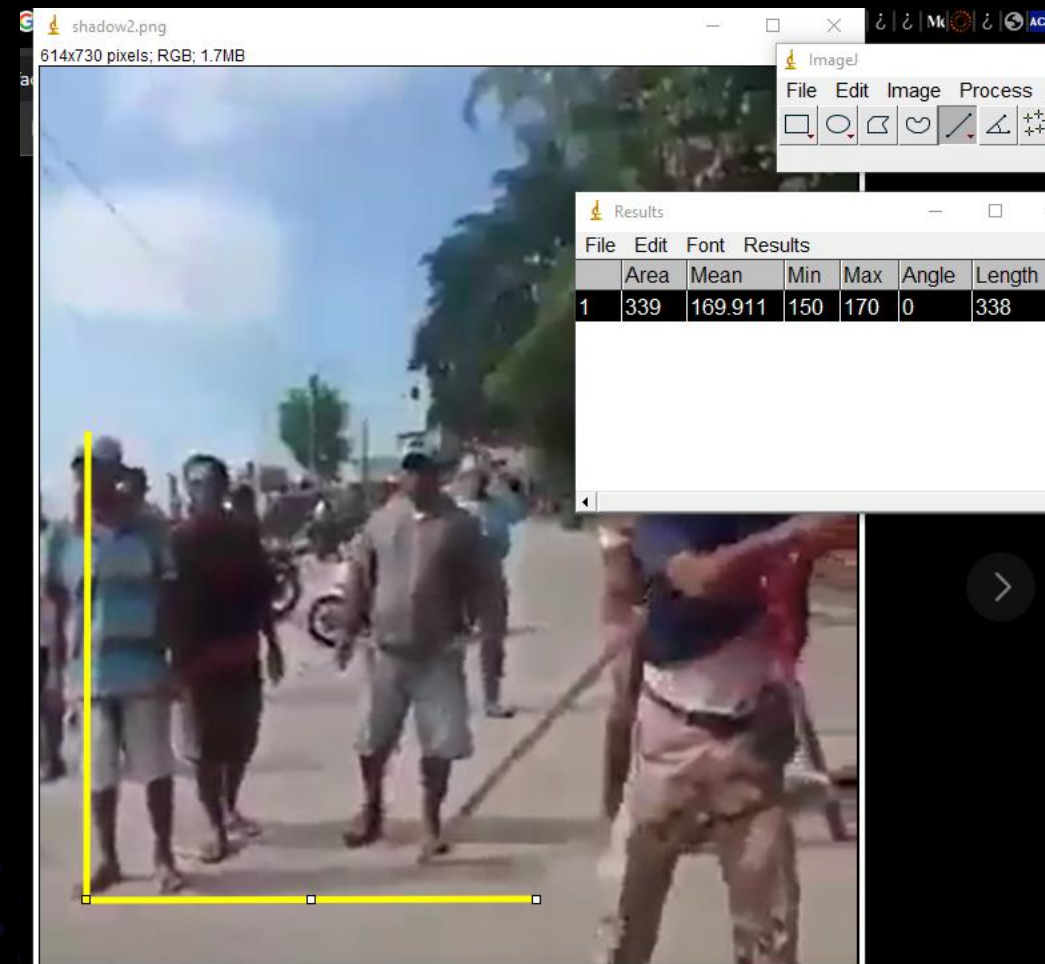
Deteksi Senjata & Milliter



Geospatial (GIS) Int &
Monitoring

TANTANGAN MASINT?

- ❑ Pengkajian data
- ❑ Banyaknya variabel
- ❑ Alat dan resources yang memadai
- ❑ Keterbatasan data
- ❑ Pencarian data yang beresiko
- ❑ Gangguan pada sensor & satelit
- ❑ Akurasi atau legitimate
- ❑ Lingkungan & zona waktu



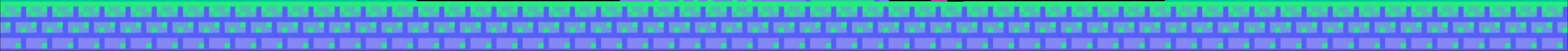
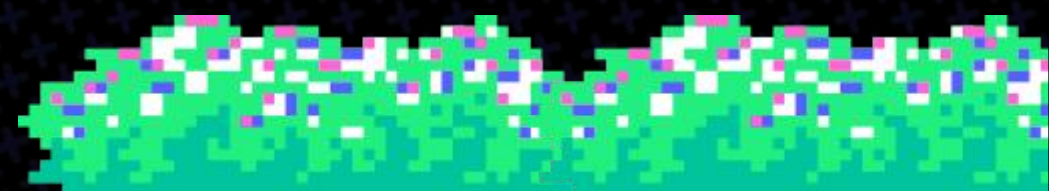
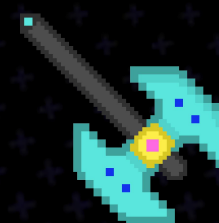
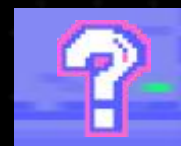
SIGN IN



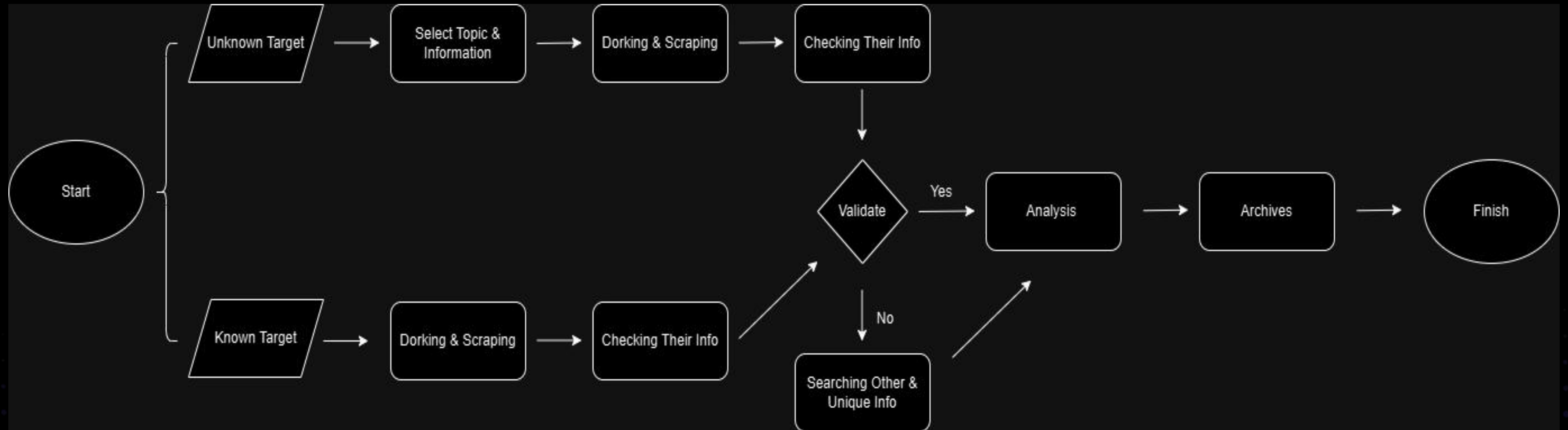
SIGN IN



METODOLOGI



OSINT - ATTACK VECTOR

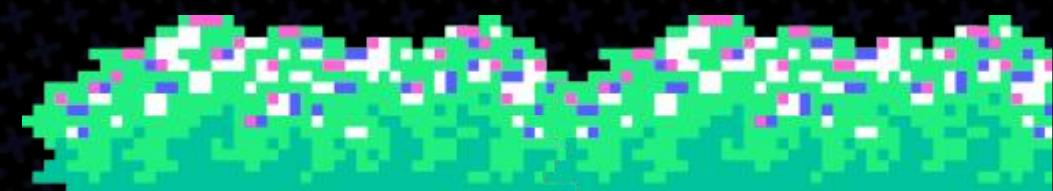
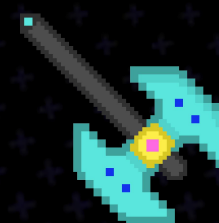
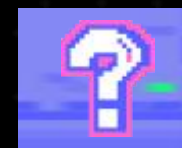


SIGN IN



SIGN IN

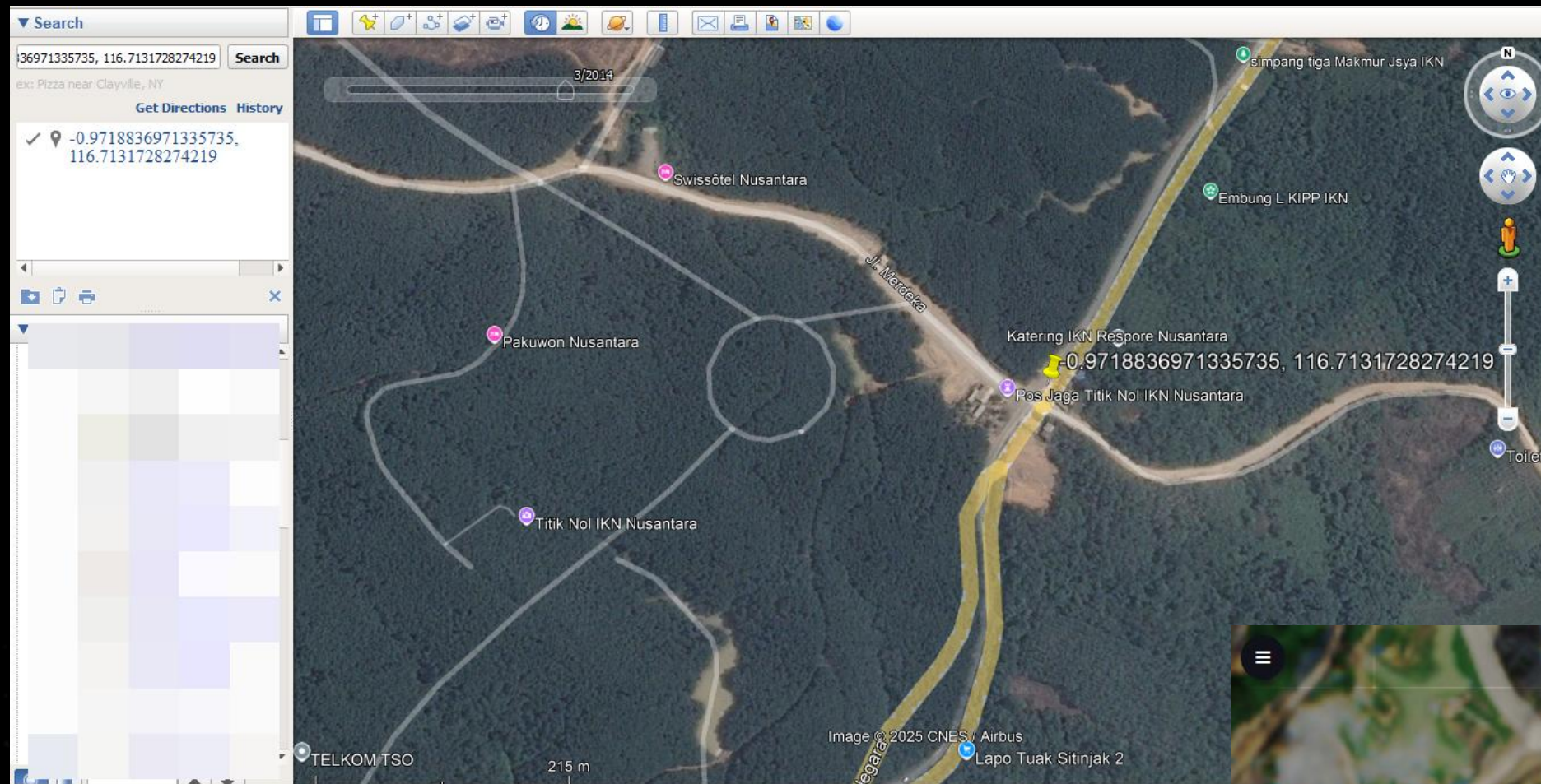
★PEMANTAUAN DATA★ SATELIT



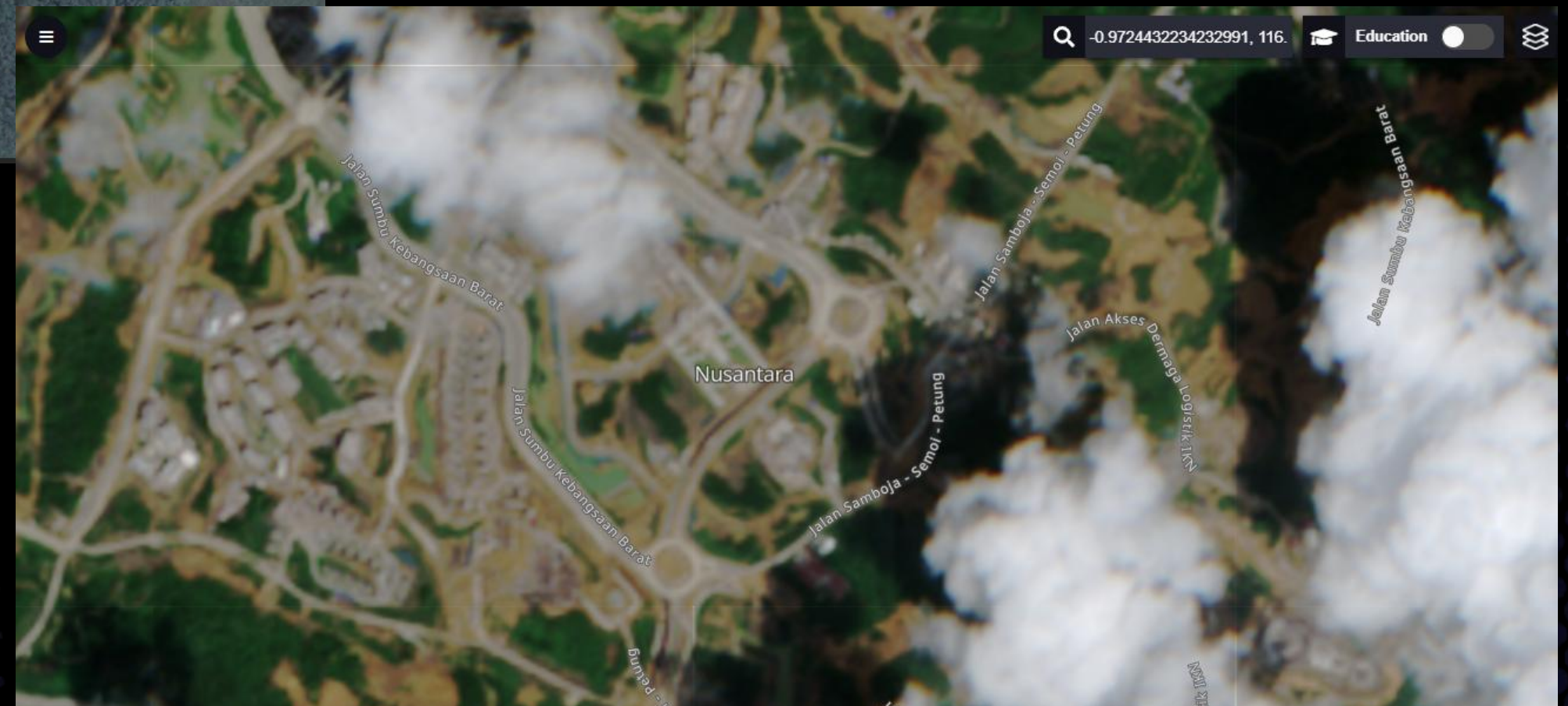
CARA PEMANTAUAN & PENCARIAN

- ☐ Tentukan objek
- ☐ Pahami karakteristik tiap satelit
- ☐ Pahami karakteristik tiap sensor
- ☐ Pahami karakteristik tiap platform GIS
- ☐ Tentukan data yang akan dianalisis
- ☐ Validasi data
- ☐ Arsip data

STUDI KASUS 1



ID IKN 2014

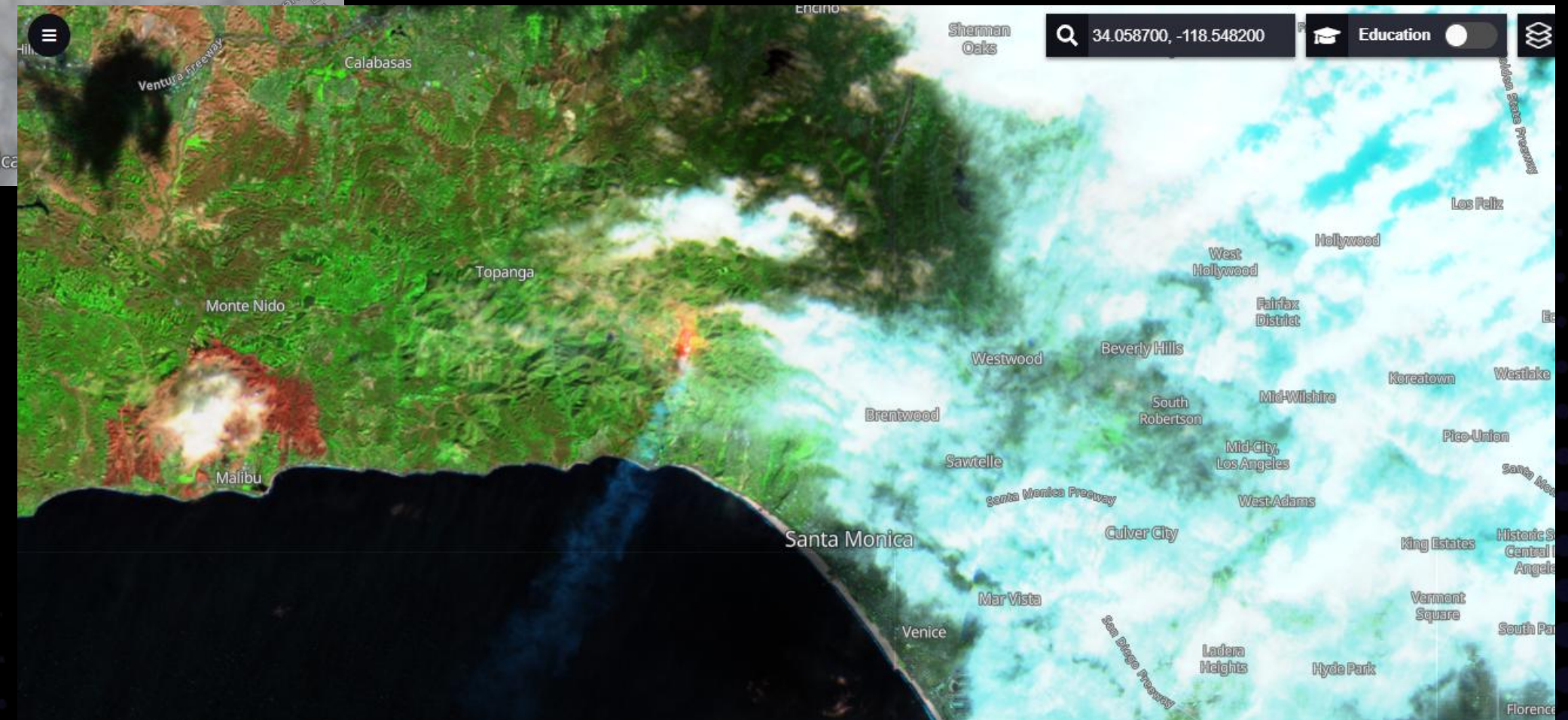


ID IKN 2025

STUDI KASUS 2

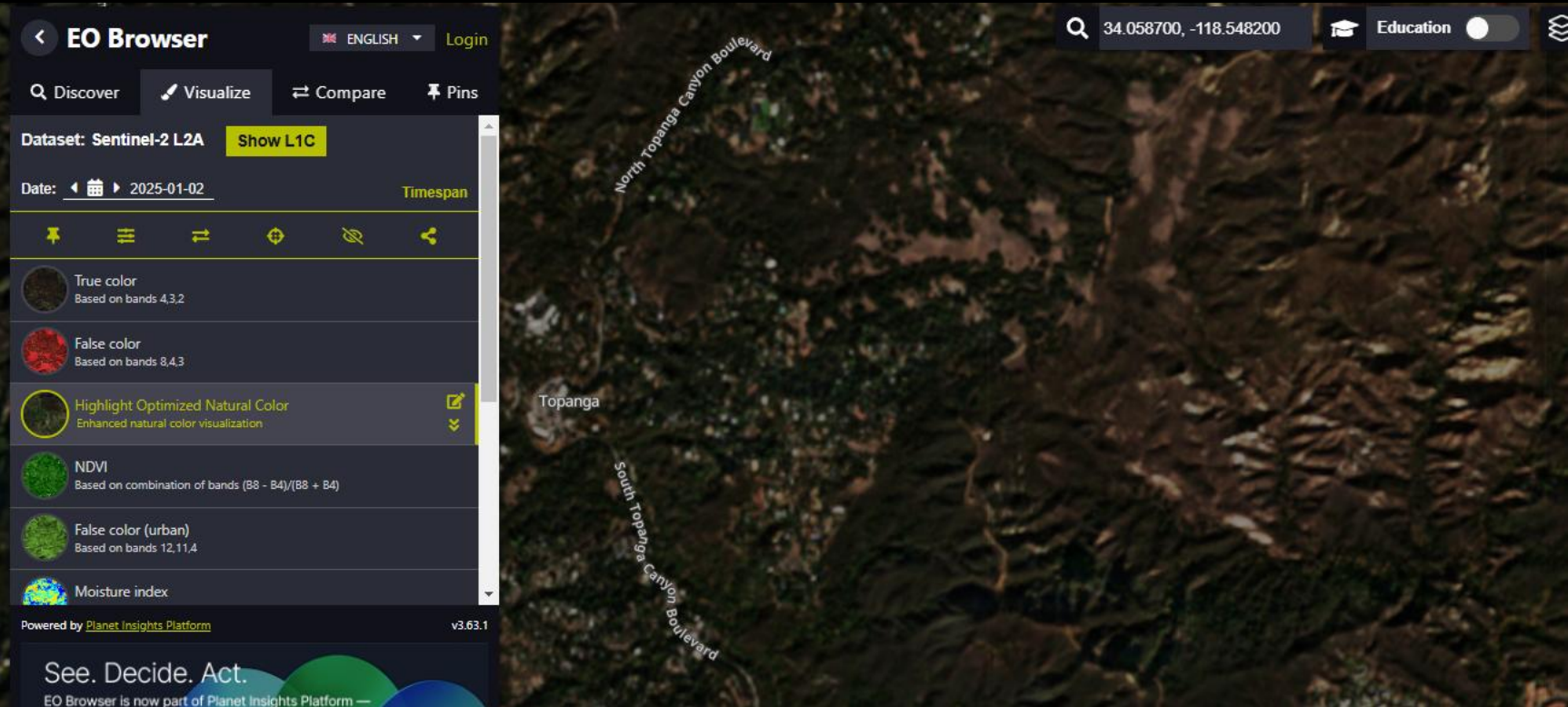


Los Angeles 7 Jan 2025

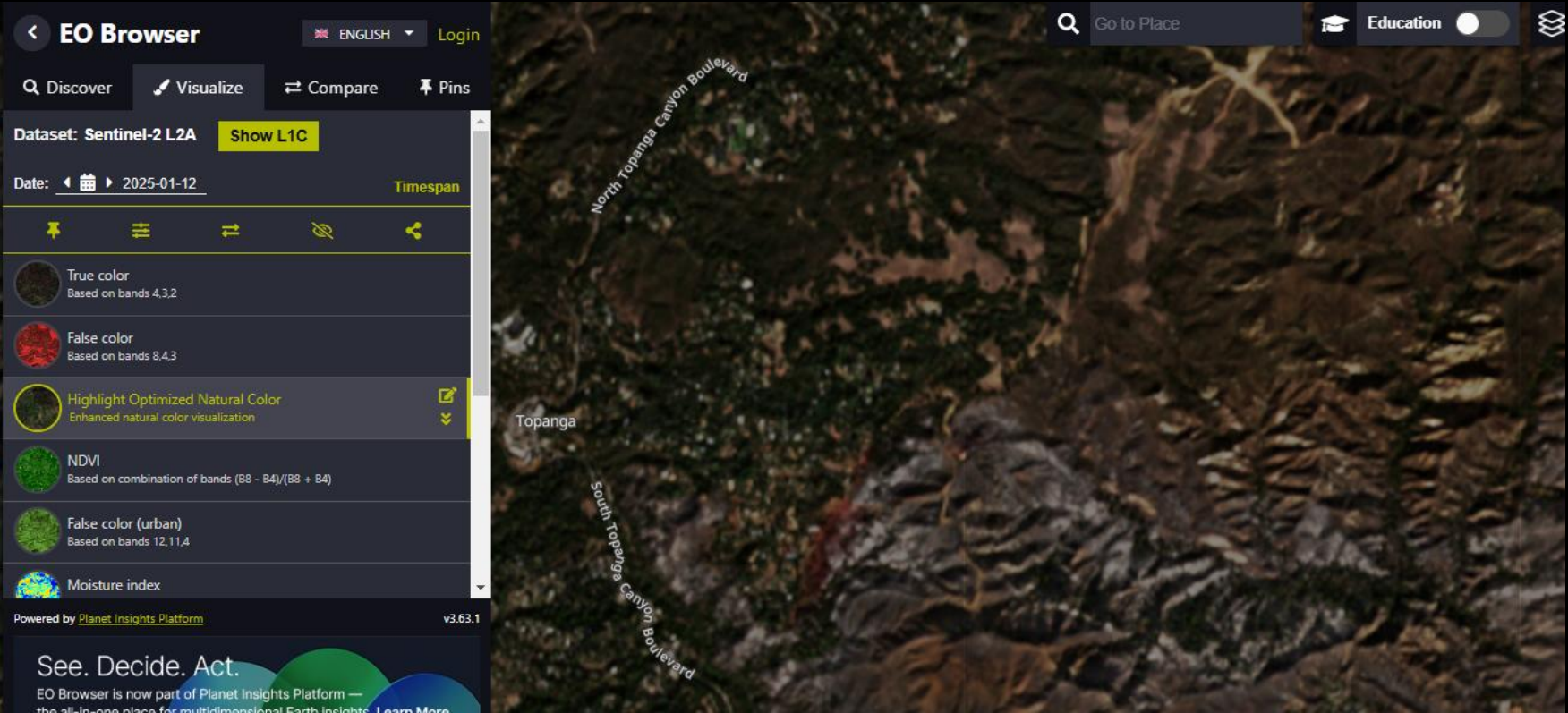


Los Angeles 7 Jan 2025

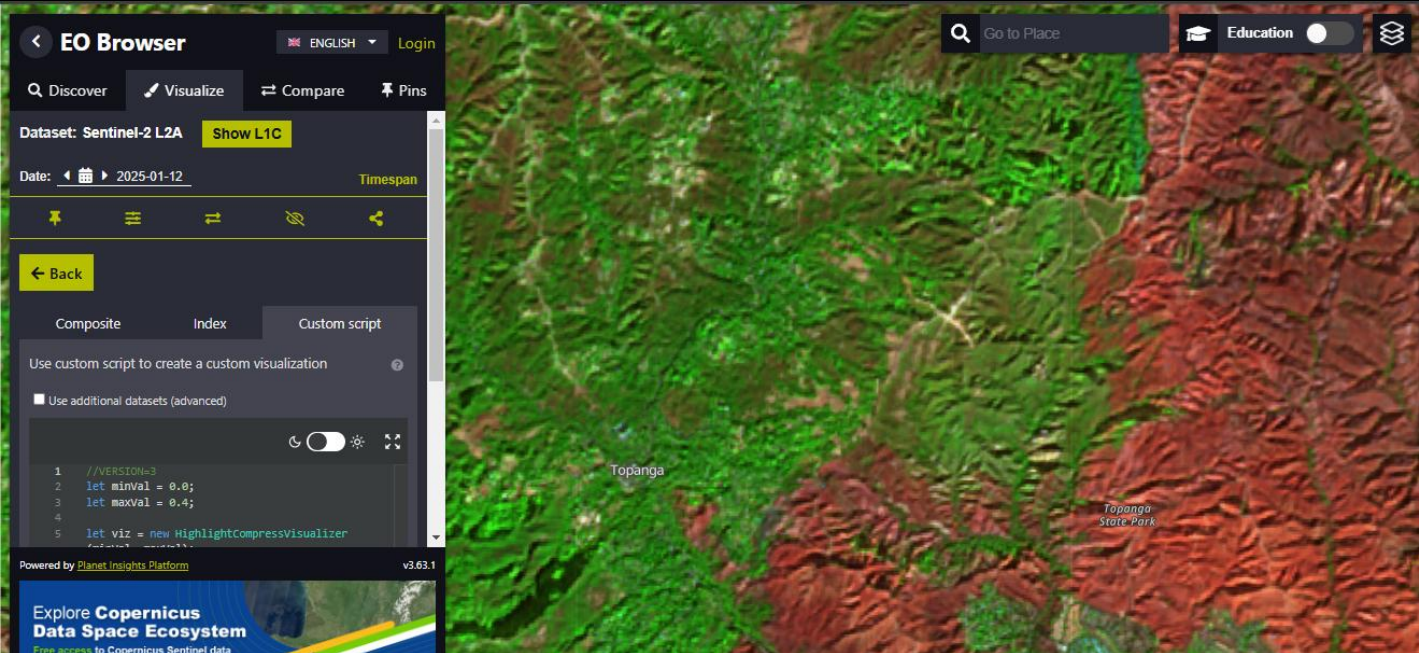
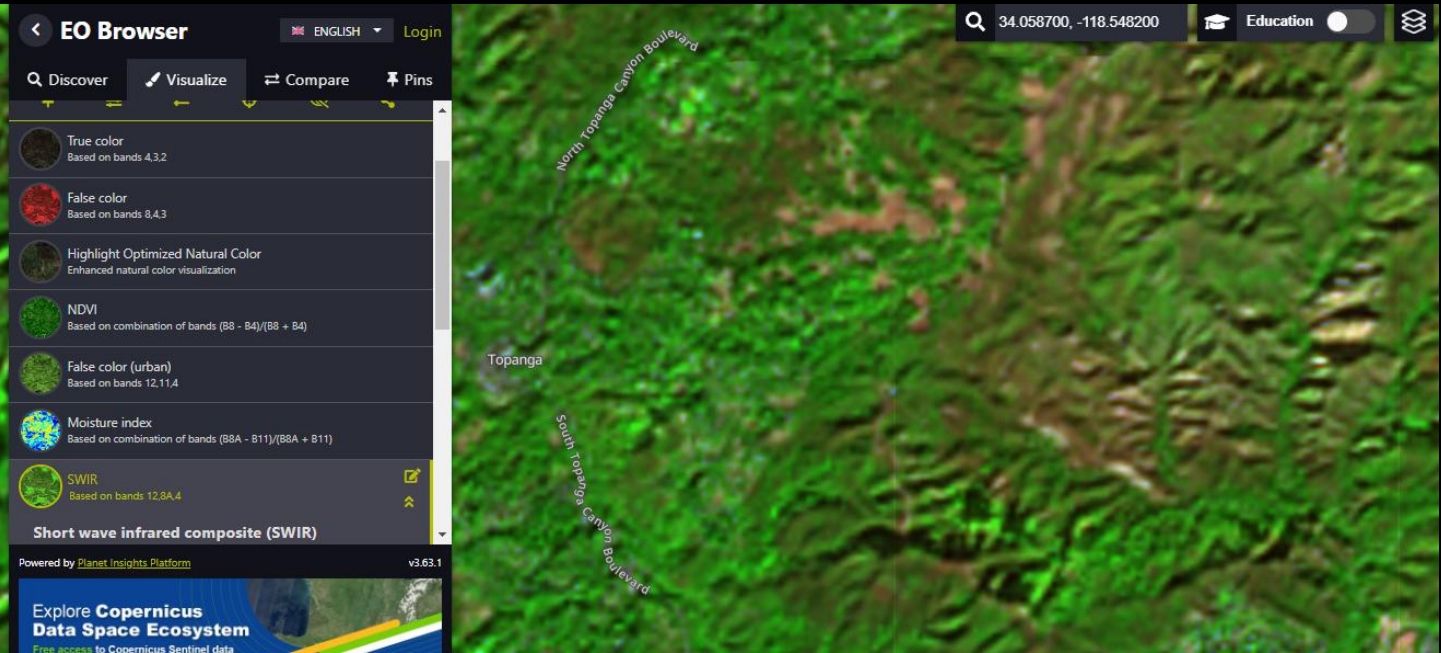
STUDI KASUS 2.1



Los Angeles 2 Jan 2025



Los Angeles 12 Jan 2025



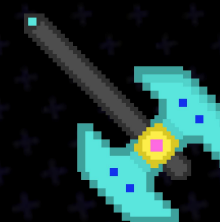
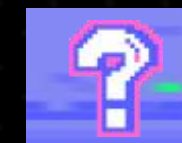
SIGN IN



SIGN IN



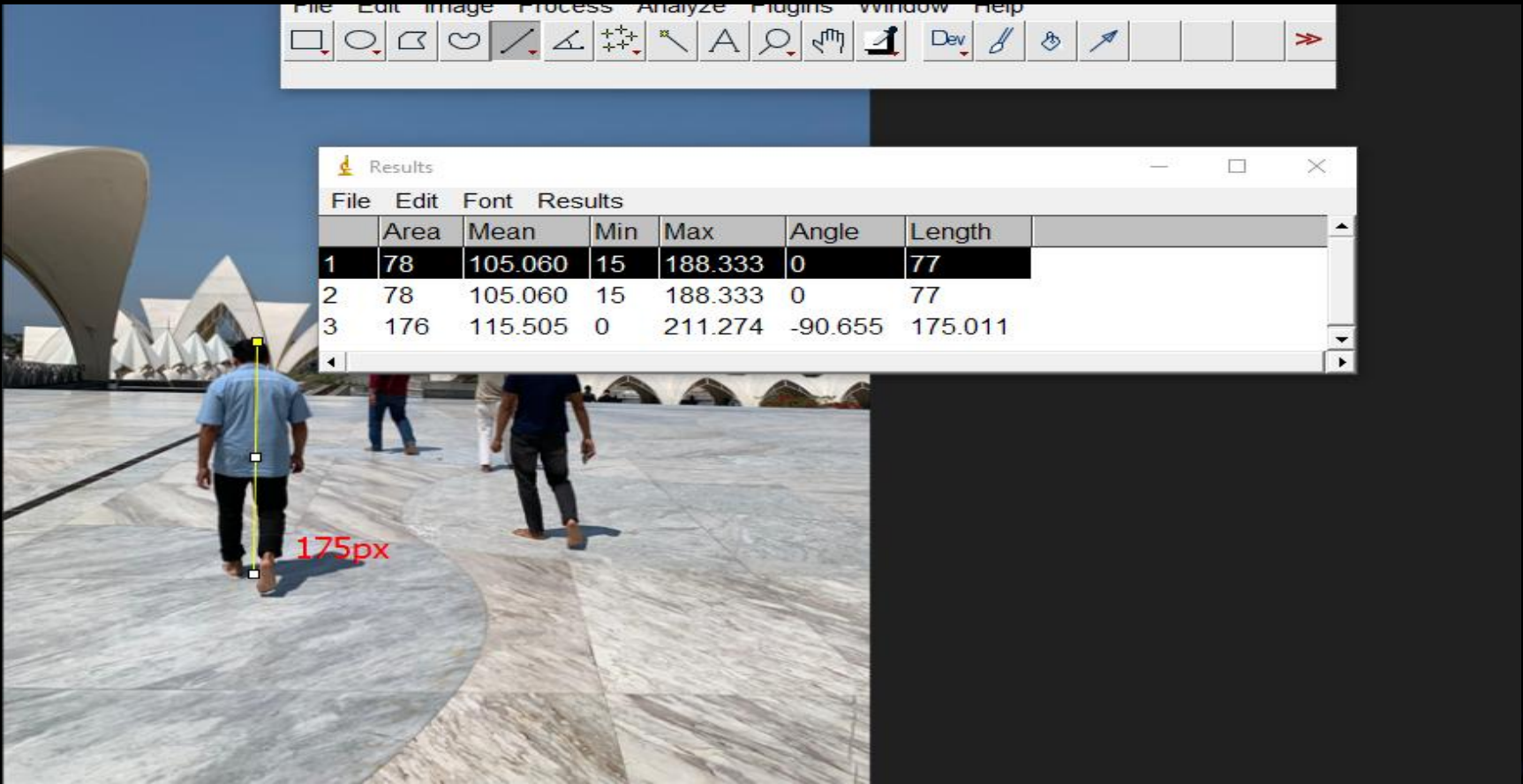
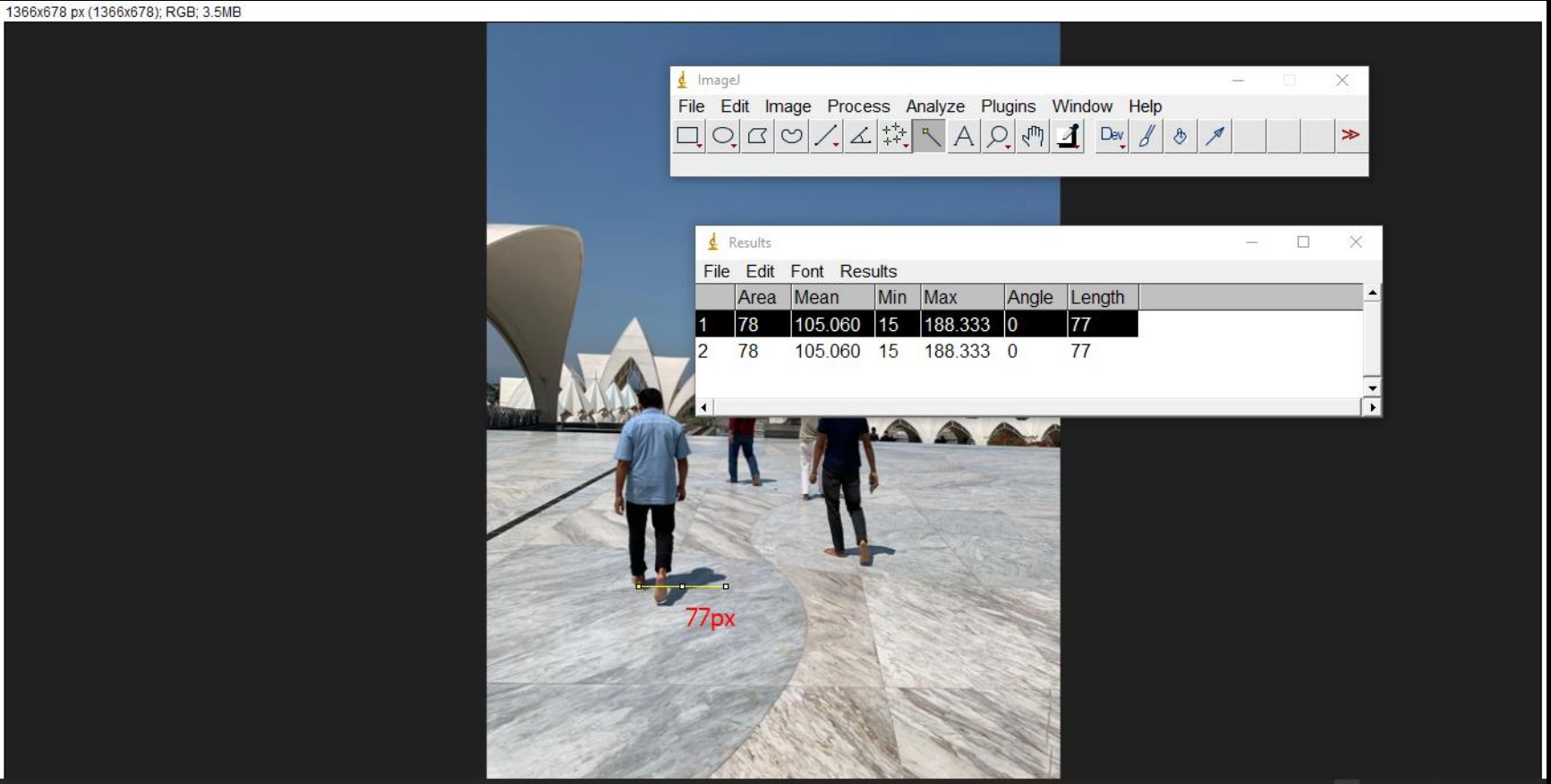
PENGUKURAN WAKTU



CARA MENENTUKAN WAKTU

- ☐ Terdapat arah matahari atau bayangan
- ☐ Terdapat objek
- ☐ Menentukan titik lokasi
- ☐ Usahakan arah objek & bayangan tegak lurus dengan kamera
- ☐ Tanggal harus diketahui
- ☐ Gambar masih orisinil tidak ada unsur edit atau kamera cembung
- ☐ Tentukan tools pixel measurement
- ☐ Jika ada bayangan pastikan bayangan pada di tempat datar

STUDI KASUS 1 - IMAGE J



STUDI KASUS 1.1 - IMAGE J

OBJECT

175.011px = 4.630499375 CM

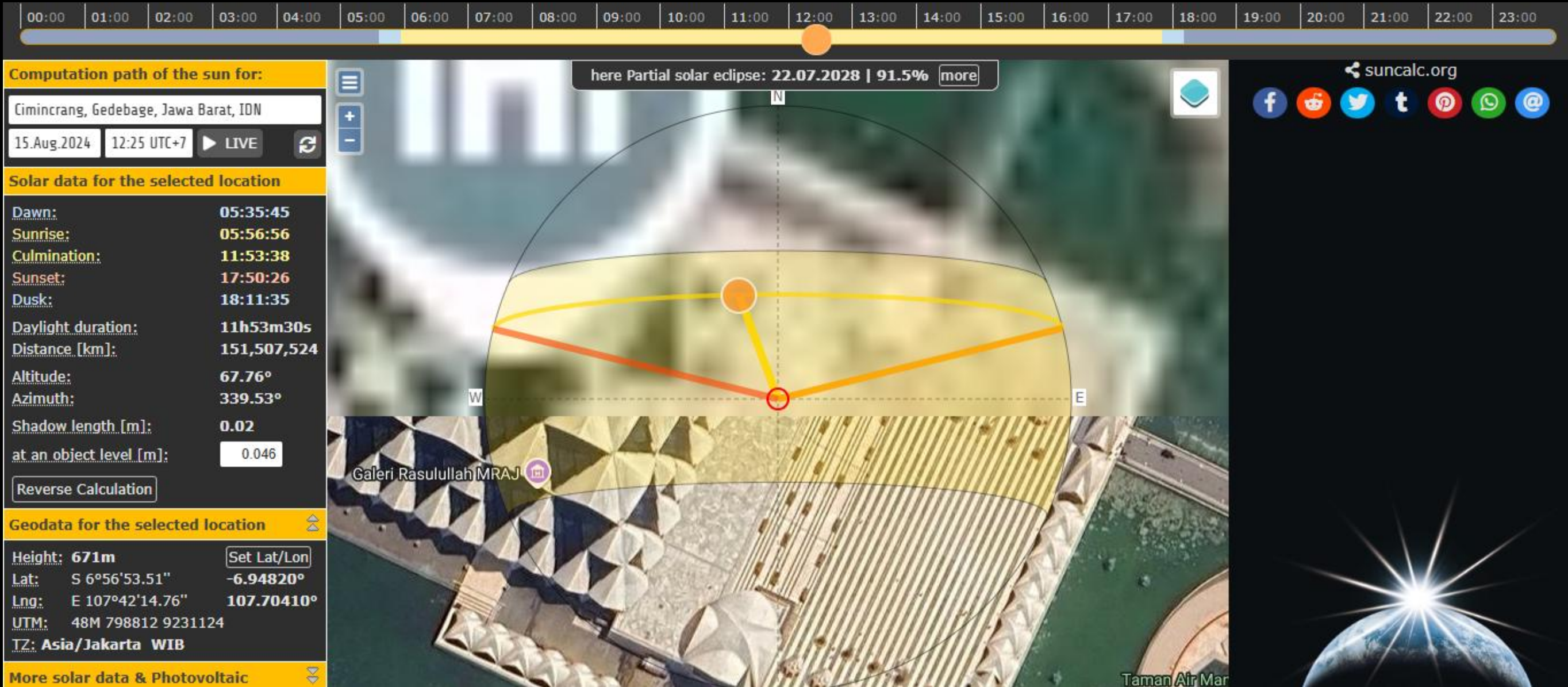
Shadow

77px = 2.037292 CM

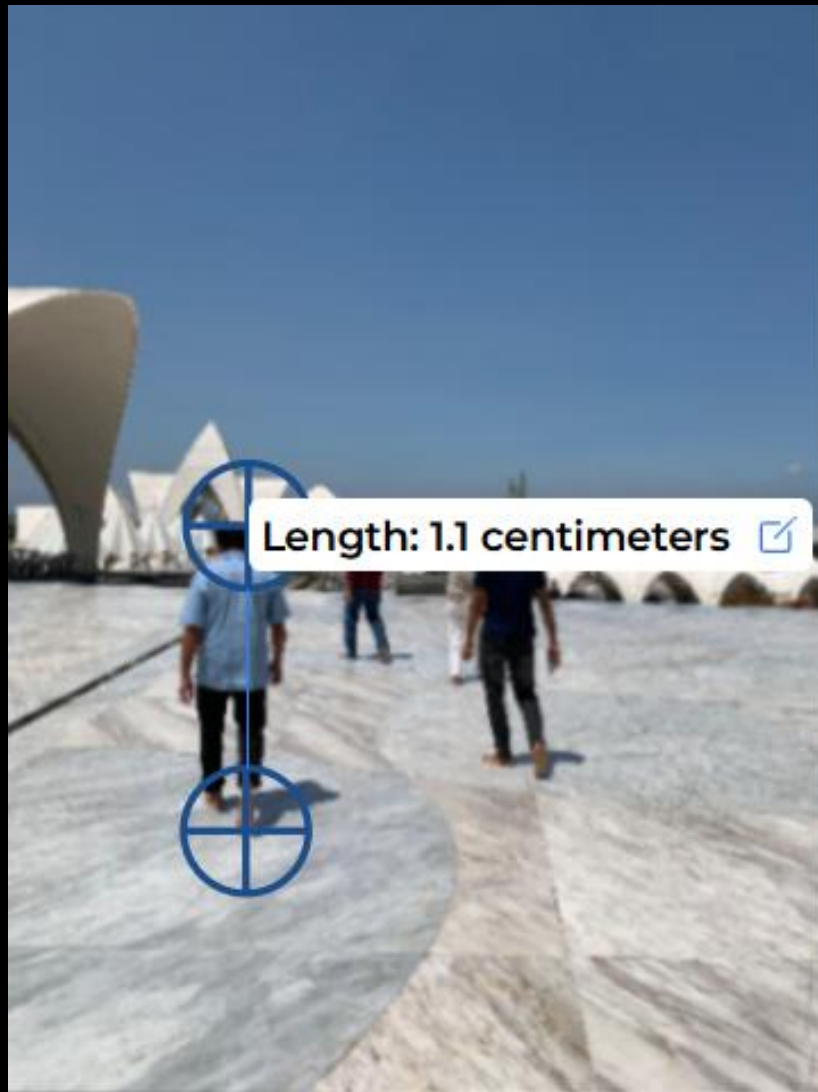
Convert ke M

Object = 0,04630499375 M

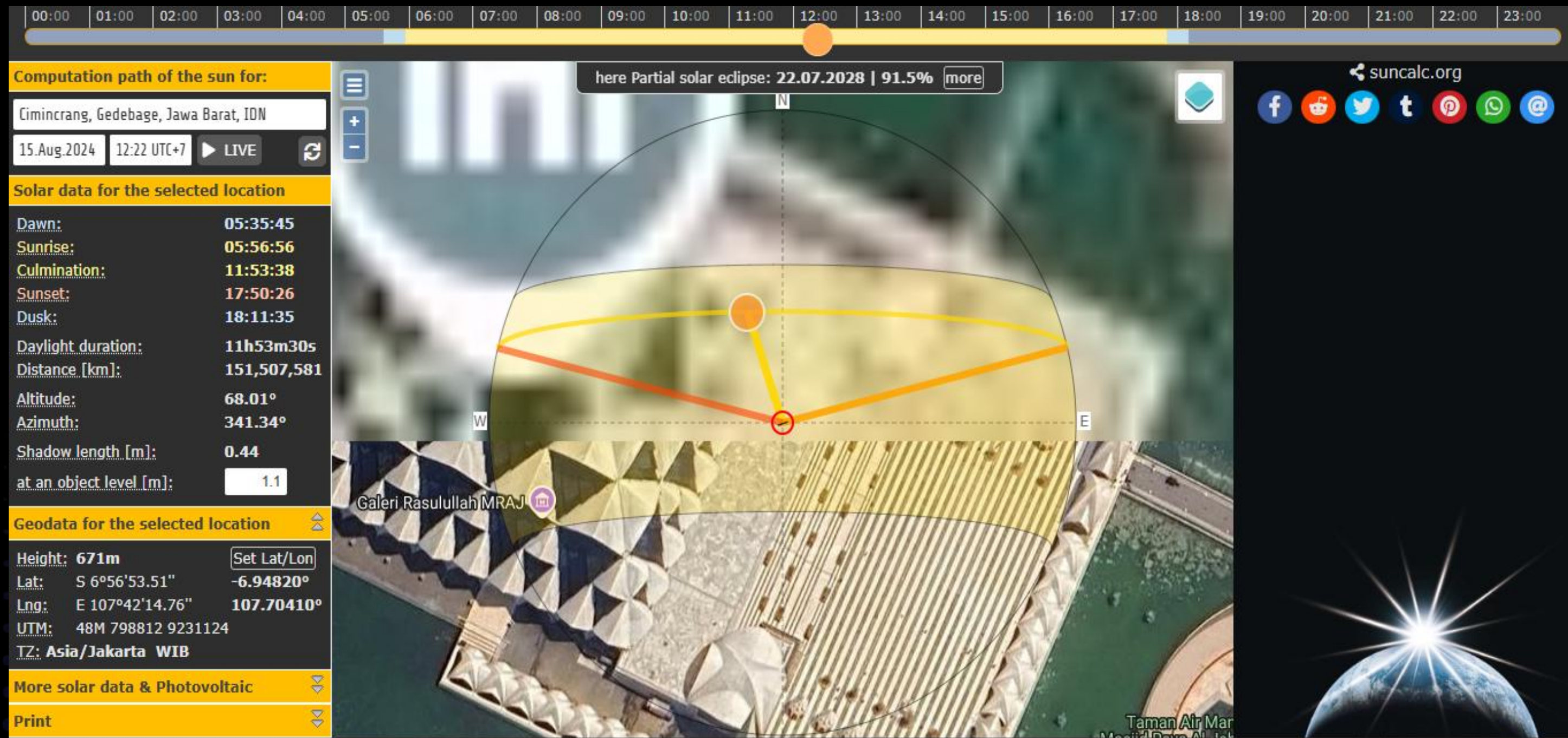
Shadow = 0,02037292 M



STUDI KASUS 2 - IMAGE MEASURE



STUDI KASUS 2.1 - IMAGE MEASURE



STUDI KASUS 3 - APPLE MEASURE



STUDI KASUS 3.1 - APPLE MEASURE

OBJECT

5 CM

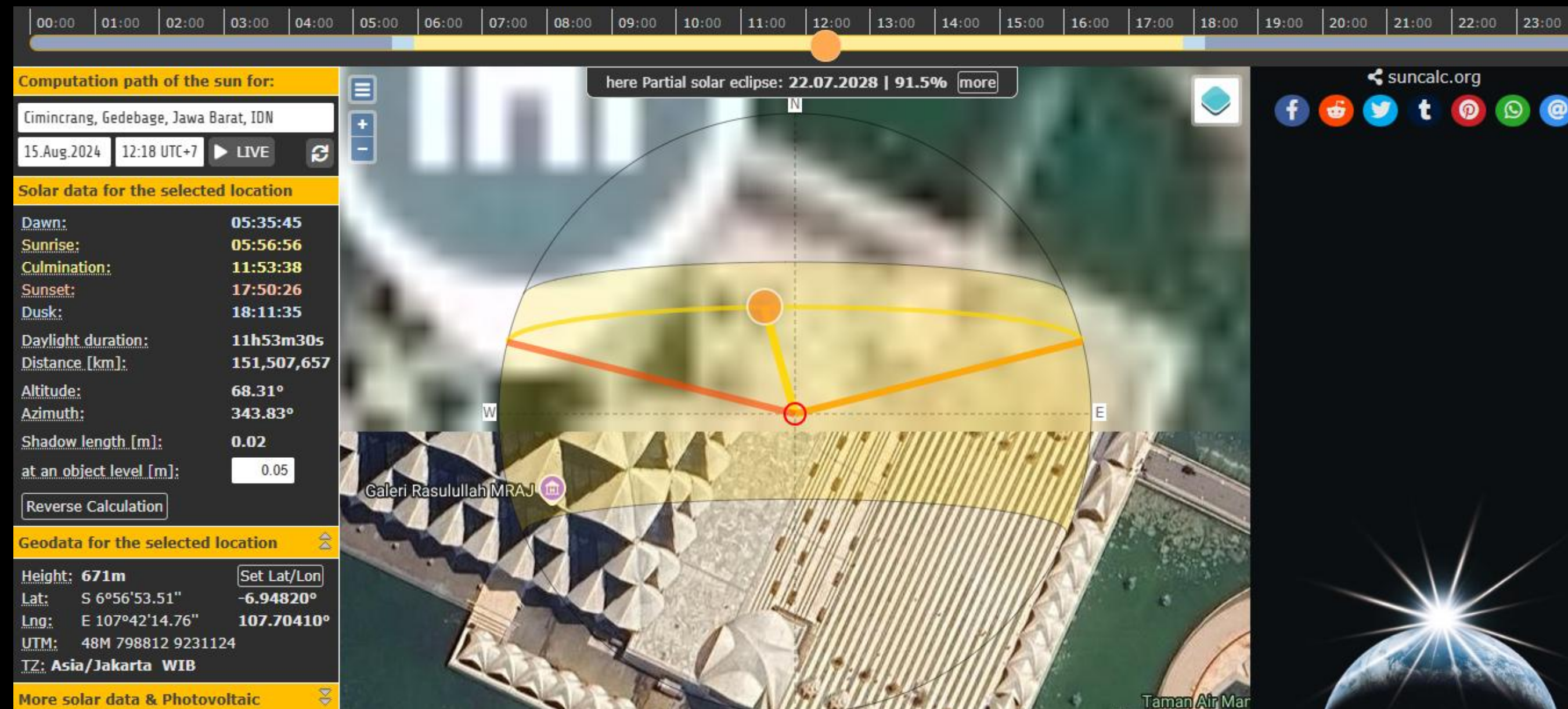
Shadow

1 CM

Convert ke M

Object = 0,05

Shadow = 0,01



CHECK DATA - TIME MEASURE



Tambah Teks

Kamis, 15 Agustus 2024 pukul 12.18

Sesuaikan



Kota Bandung - Cimincrang

Sesuaikan

Perkiraan waktu nya adalah sekitar pukul 12.00 - 13.00 WIB

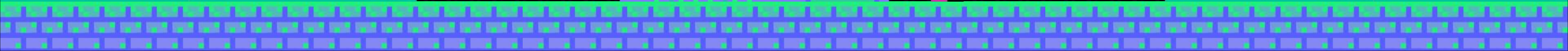
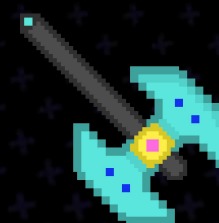
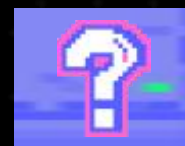
SIGN IN



SIGN IN



VERIFIKASI DATA



TEKNIK VERIFIKASI DATA

- ☐ Terdapat unsur 5W + 1H
- ☐ Cari sumber yang berbeda
- ☐ Pahami BIAS
- ☐ Verifikasi dokumen atau dataset yang ada
- ☐ Check darimana sumber tersebut?
- ☐ Mengapa atau alasan adanya topik (narasi) tersebut?
- ☐ Check AI atau deepfake
- ☐ Parsing data dengan text intelijen seperti sentimen, waktu, akun (Knowing patern)
- ☐ Check data broker archiver (web archiver & etc)

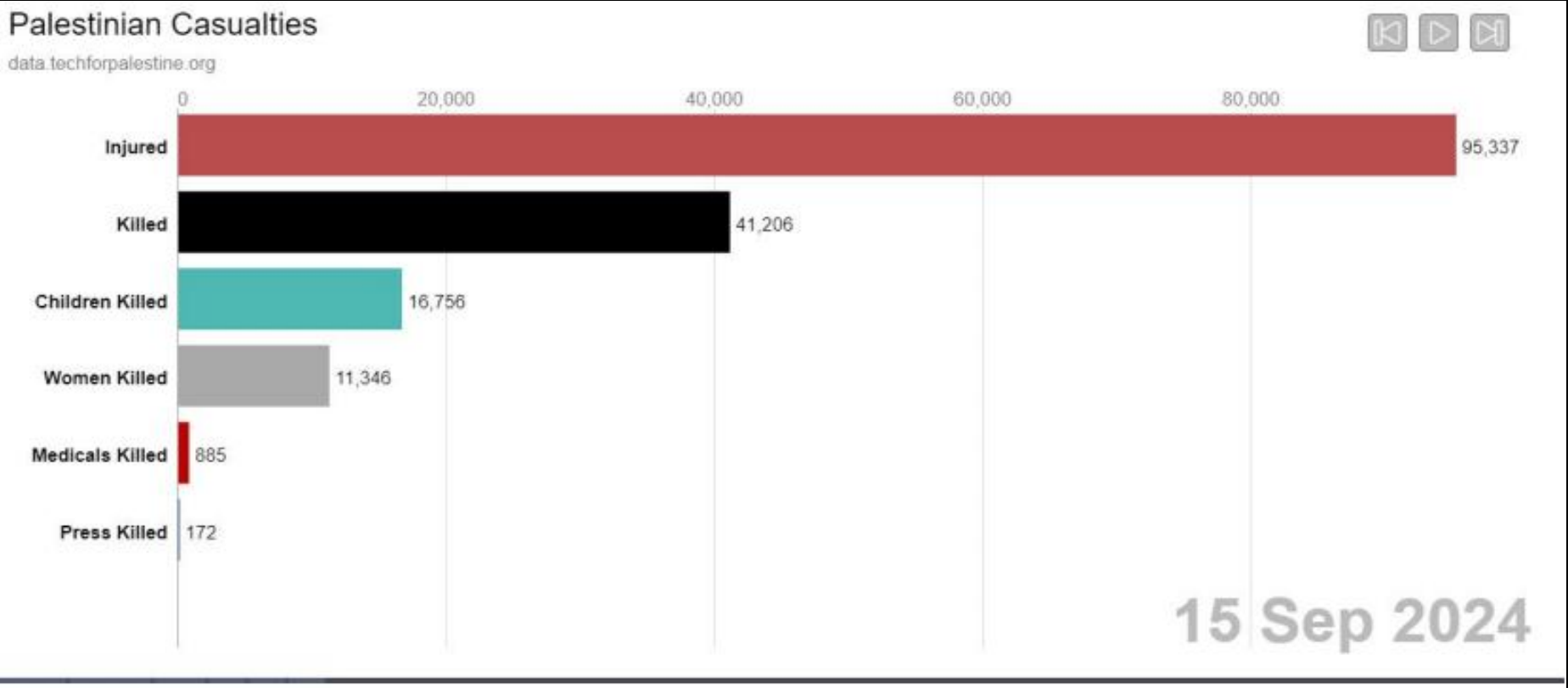
STUDI KASUS

	A	B	C	D	E	F	G	H
1								
2	Palestine	Gaza Strip	Deir El Balah	PSE	PS0265	PS02	January	2016
3	Palestine	Gaza Strip	Rafah	PSE	PS0275	PS02	January	2016
4	Palestine	West Bank	Ramallah and Al Bireh	PSE	PS0130	PS01	January	2016
5	Palestine	West Bank	Al Quds	PSE	PS0140	PS01	January	2016
6	Palestine	West Bank	Jenin	PSE	PS0101	PS01	January	2016
7	Palestine	West Bank	Tubas	PSE	PS0105	PS01	January	2016
8	Palestine	West Bank	Tulkarm	PSE	PS0110	PS01	January	2016
9	Palestine	Gaza Strip	Gaza City	PSE	PS0260	PS02	January	2016
10	Palestine	Gaza Strip	Khan Yunis	PSE	PS0270	PS02	January	2016
11	Palestine	West Bank	Nablus	PSE	PS0115	PS01	January	2016
12	Palestine	West Bank	Salfit	PSE	PS0125	PS01	January	2016
13	Palestine	Gaza Strip	North Gaza	PSE	PS0255	PS02	January	2016
14	Palestine	West Bank	Bethlehem	PSE	PS0145	PS01	January	2016
15	Palestine	West Bank	Hebron	PSE	PS0150	PS01	January	2016
16	Palestine	West Bank	Jericho	PSE	PS0135	PS01	January	2016
17	Palestine	West Bank	Qalqilya	PSE	PS0120	PS01	January	2016
18	Palestine	Gaza Strip	Deir El Balah	PSE	PS0265	PS02	February	2016
19	Palestine	Gaza Strip	Rafah	PSE	PS0275	PS02	February	2016
20	Palestine	West Bank	Ramallah and Al Bireh	PSE	PS0130	PS01	February	2016
21	Palestine	West Bank	Al Quds	PSE	PS0140	PS01	February	2016
22	Palestine	West Bank	Jenin	PSE	PS0101	PS01	February	2016
23	Palestine	West Bank	Tubas	PSE	PS0105	PS01	February	2016
24	Palestine	West Bank	Tulkarm	PSE	PS0110	PS01	February	2016
25	Palestine	Gaza Strip	Gaza City	PSE	PS0260	PS02	February	2016

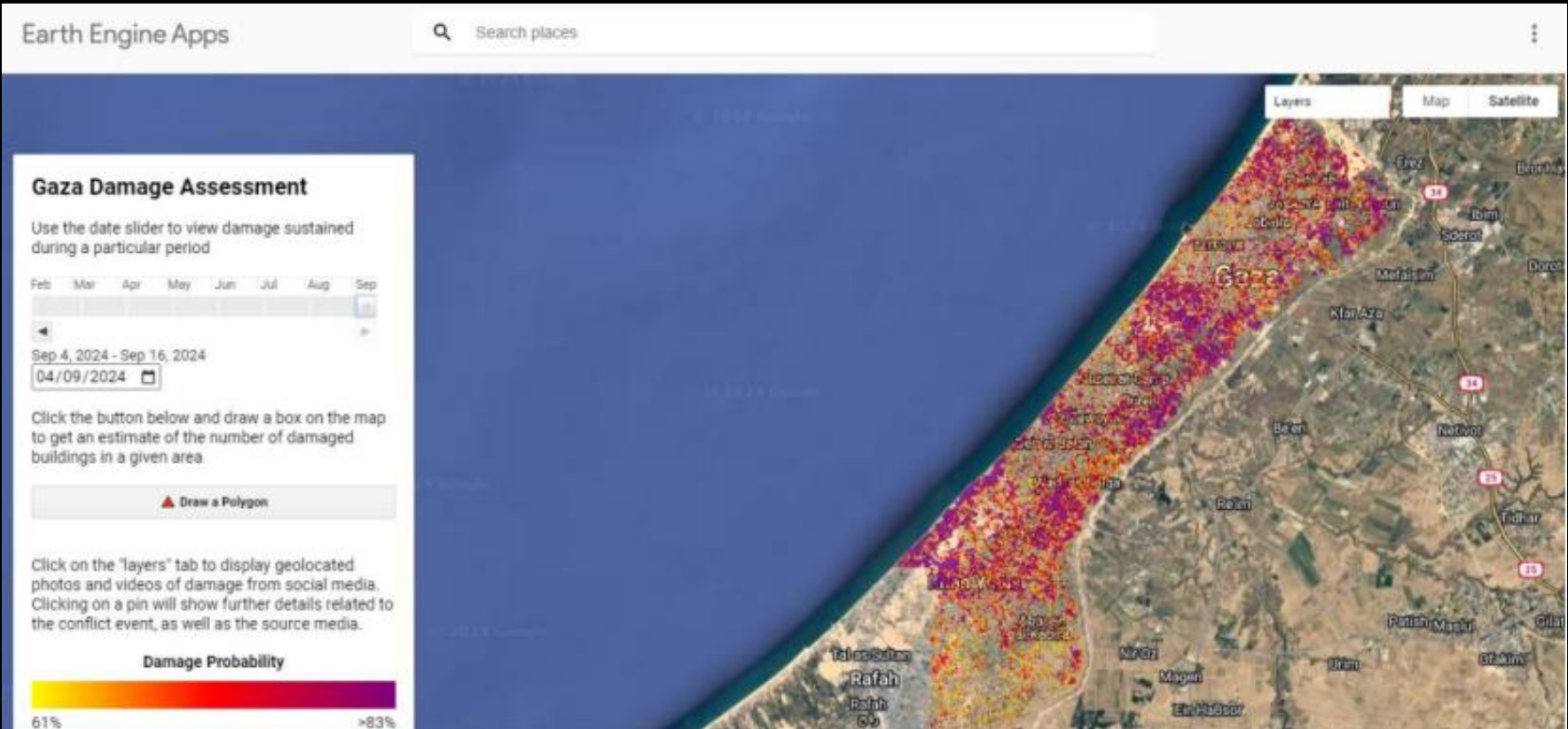
OCHA HUMANTARIAN DATA EXCHANGE

	A	B	C	D	E	F	G	H
1658	Palestine	Gaza Strip	Khan Yunis	PSE	PS0270	PS02	August	2024
1659	Palestine	West Bank	Nablus	PSE	PS0115	PS01	August	2024
1660	Palestine	West Bank	Salfit	PSE	PS0125	PS01	August	2024
1661	Palestine	Gaza Strip	North Gaza	PSE	PS0255	PS02	August	2024
1662	Palestine	West Bank	Bethlehem	PSE	PS0145	PS01	August	2024
1663	Palestine	West Bank	Hebron	PSE	PS0150	PS01	August	2024
1664	Palestine	West Bank	Jericho	PSE	PS0135	PS01	August	2024
1665	Palestine	West Bank	Qalqilya	PSE	PS0120	PS01	August	2024
1666	Palestine	Gaza Strip	Deir El Balah	PSE	PS0265	PS02	September	2024
1667	Palestine	Gaza Strip	Rafah	PSE	PS0275	PS02	September	2024
1668	Palestine	West Bank	Ramallah and Al Bireh	PSE	PS0130	PS01	September	2024
1669	Palestine	West Bank	Al Quds	PSE	PS0140	PS01	September	2024
1670	Palestine	West Bank	Jenin	PSE	PS0101	PS01	September	2024
1671	Palestine	West Bank	Tubas	PSE	PS0105	PS01	September	2024
1672	Palestine	West Bank	Tulkarm	PSE	PS0110	PS01	September	2024
1673	Palestine	Gaza Strip	Gaza City	PSE	PS0260	PS02	September	2024
1674	Palestine	Gaza Strip	Khan Yunis	PSE	PS0270	PS02	September	2024
1675	Palestine	West Bank	Nablus	PSE	PS0115	PS01	September	2024
1676	Palestine	West Bank	Salfit	PSE	PS0125	PS01	September	2024
1677	Palestine	Gaza Strip	North Gaza	PSE	PS0255	PS02	September	2024
1678	Palestine	West Bank	Bethlehem	PSE	PS0145	PS01	September	2024
1679	Palestine	West Bank	Hebron	PSE	PS0150	PS01	September	2024
1680	Palestine	West Bank	Jericho	PSE	PS0135	PS01	September	2024
1681	Palestine	West Bank	Qalqilya	PSE	PS0120	PS01	September	2024
1682								

STUDI KASUS



DATA TECHFORPALESTINE



DATA DAMAGE GEE BELLINGCAT

APA YANG HARUS DILAKUKAN?

- ☐ Melakukan parsing data
- ☐ Pencarian data
- ☐ Pententuan 5W + 1H
- ☐ Analisis
- ☐ Pengumpulan data untuk pembandingan
- ☐ Arsip data dan pengumpulan bukti yang ada
- ☐ Verifikasi data e.g geolocate & time measure
- ☐ Pelaporan dan kesimpulan

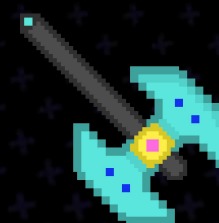
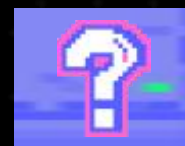
SIGN IN



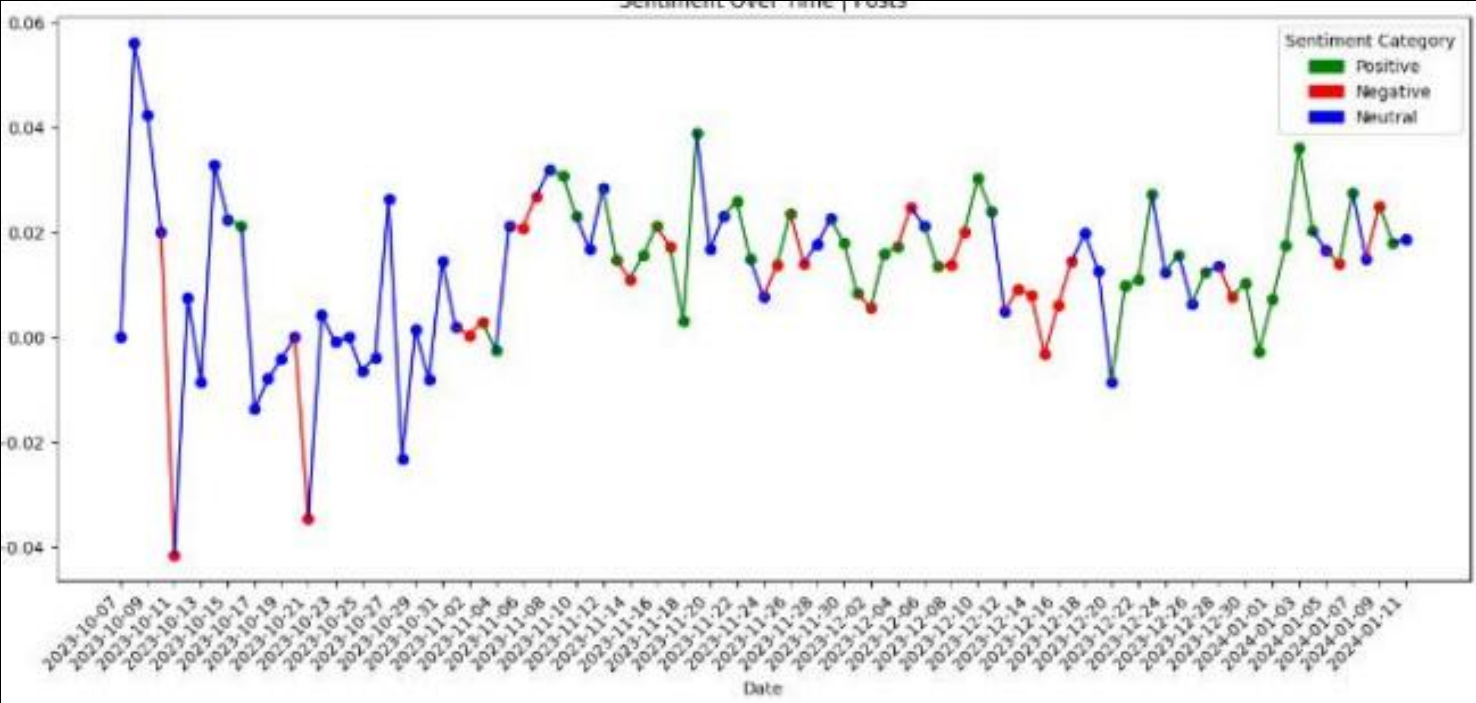
SIGN IN











EXAMPLE




PENCARIAN INFORMASI



20		Hughes / Raytheon BGM-71 TOW / TOW-2 Anti-Tank Guided-Missile (ATGM) System
21		IMI B-300 Reusable Anti-Tank (AT) Rocket System
22		IMI MAPATS (Man-Portable Anti-Tank System) Man-Portable Anti-Tank (AT) Missile System
23		Ingram MAC-10 (M10) Submachine Gun (SMG)
24		IWI Galil ACE Assault Rifle / Assault Carbine / Battle Rifle
25		IWI Galil ARM / SAR Assault Rifle / Carbine / Submachine Gun (SMG) / Designated Marksman Rifle (DMR)
26		IWI Galil MAR (Micro Assault Rifle / Micro-Galil) Compact Assault Rifle / Carbine
27		IWI Galil Marksman Assault Rifle Mark 1

Return

Prev19 of 530Next



IDOSMP 728

DATE3 June 2024

SOURCEIsraeli Air Force

REPORTED LOCATIONIsrael

YEAR2024

MUNITION CATEGORYAir-Delivered Bomb

FUNCTIONAL USEBlast MunitionFragmentation Munition

TENTATIVE MODELGBU-31 JDAM

BASE COLOURGreenGrey / Silver

CONDITIONUndelivered MunitionUnfunctioned MunitionWhole

GUIDANCEGuided Munition

DOMAINAir-to-Surface

FINS CHARACTERISTICWinged FinsMultiple Fins

OCHA

ABOUT USCOORDINATIONUPDATESPUBLICATIONSDATAFUNDINGDONATE

العملية في غزة

REPORTED IMPACT SINCE 7 OCTOBER 2023

PALESTINIANS

38,295+

Reported killed

MoH Gaza, in addition to 553 in the West Bank (OCHA) and ~1,000 in Israel, including people involved in the 7 October attack (Israeli authorities)

~88,241

Reported injured

MoH Gaza

ISRAELIS

1,200+

Reported killed

The estimate, which includes foreign nationals, has been changed by the Israeli sources.

~5,432

Reported injured

Israeli authorities, including foreign nationals

DAMAGE AND IDPS

70,000+

Housing units destroyed in Gaza

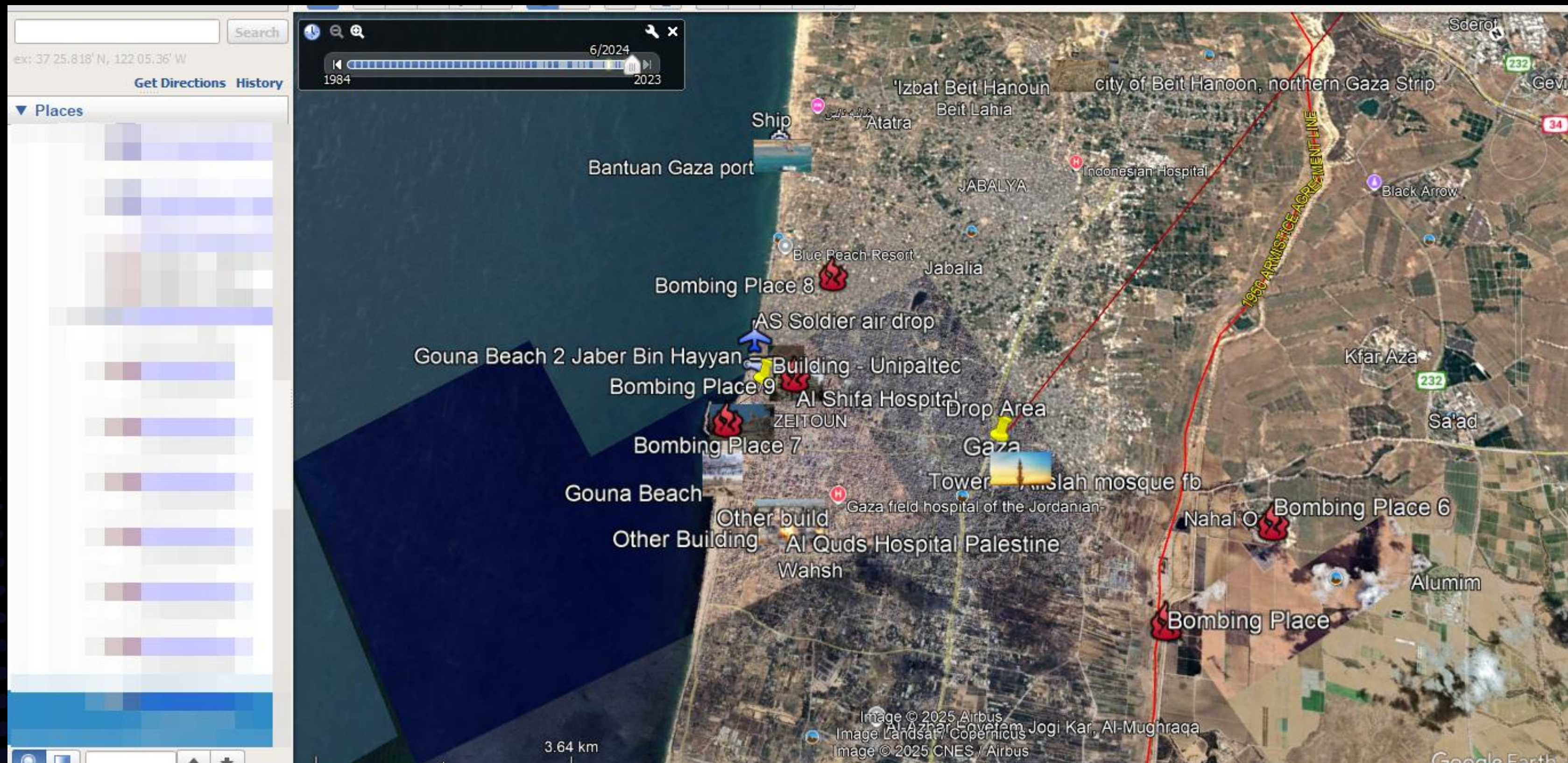
MoPWH

1.9 million

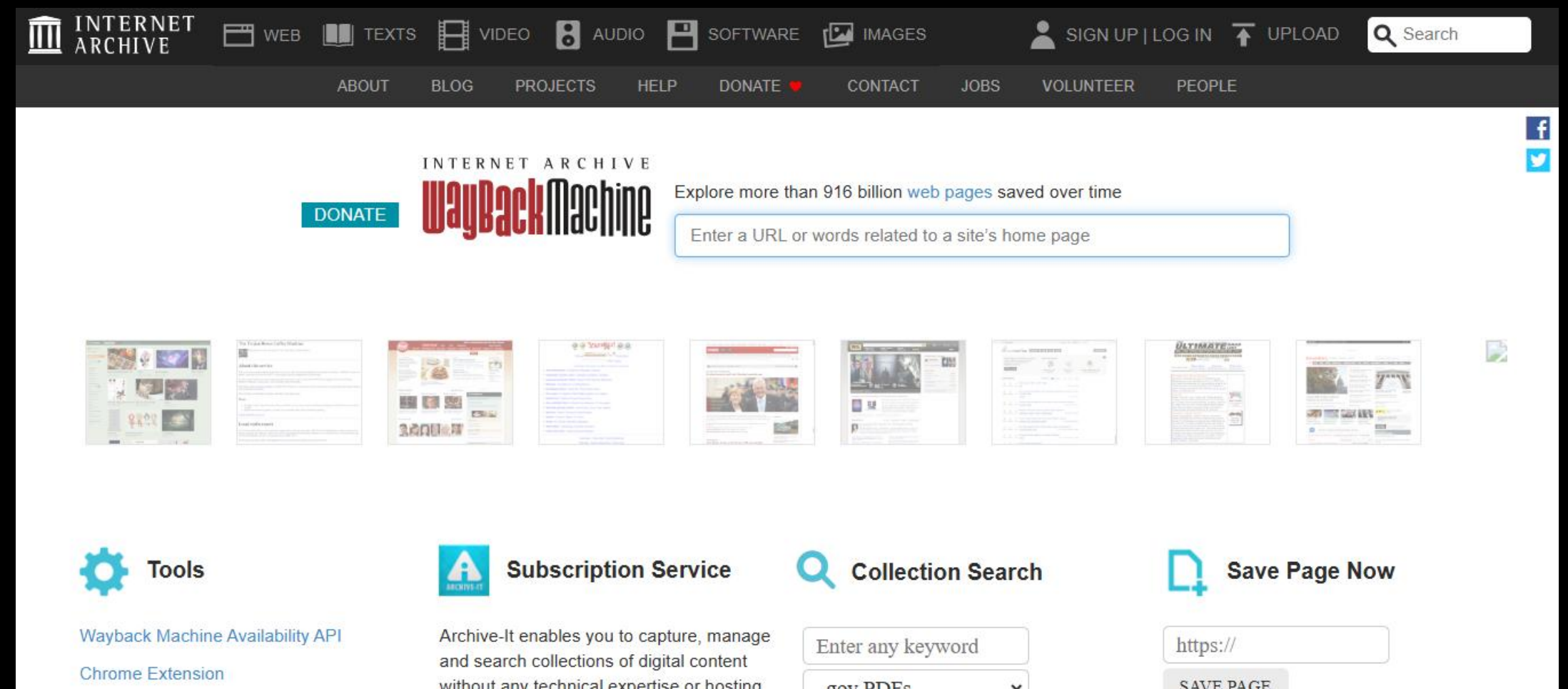
Displaced in Gaza

UN estimation

GEOLOCATE & MASINT



REPORTING & ARSIP



TANTANGAN

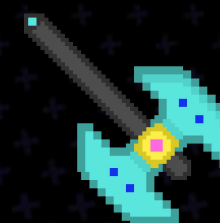
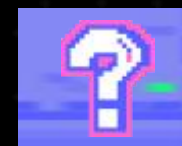
- ❑ Disinformasi & propaganda
- ❑ Deepfake atau AI
- ❑ Bot atau buzer account
- ❑ Keterbatasan data atau sumber daya
- ❑ Keterbatasan wewenang
- ❑ Time consuming
- ❑ Manipulasi data
- ❑ Tekanan atau ancaman
- ❑ BIAS
- ❑ Etika & privasi

SIGN IN



SIGN IN

★ INTERMEZO & CHEAT ★ SHEETS



TOOLS

❑ General

- Maltego
- Tool scrapper
- Data broker
- Archive site

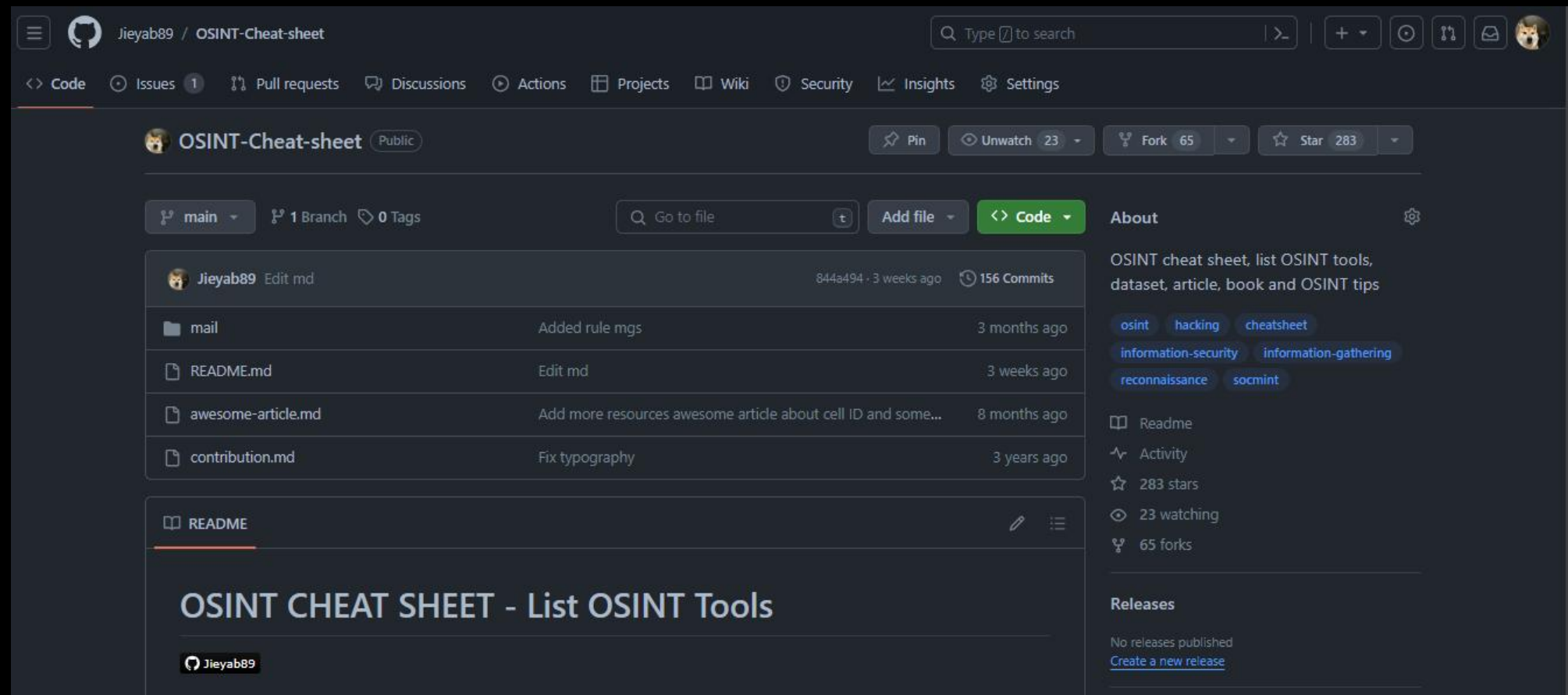
❑ SOCMINT

- Twitterdeck
- Spokeo
- Holehe
- Maltego

❑ MASINT

- Satelite Imagery
- Nasa firms
- Image j, Image measurement, apple measure

Free Resources & Book



OSINT CHEAT SHEET

Table of Content

- Web Intel
- SOCMINT
- SIGINT
- Collection Dataset
- GEOINT
- Darkweb Intel
- CTI
- Cryptocurrency Intel



Free Resources & Book



OSINT Handbook

Table of Content

- Intro about cyber threats intelligence
- Technique cyber threats intelligence
- Platform cyber threats intelligence
- Sample files and case study
- Prevent OSINT technique
- Real case and live target
- Prevent cyber threats
- Social engineering
- Intro about OSINT
- OSINT technique
- Spiderfoot tool
- Maltego tool
- Bonus
- Quiz



LOGOUT



LOGOUT



THANK YOU

